

# TOPSELLERS

## LABOPLAST TOP QUALITY PLASTIC LABWARE



### LaboPlast® – always an eye on quality!

Bürkle GmbH is the market leader in sampling and bottling equipment for use in laboratories, industry and science.

Bürkle has also marketed and sold a wide variety of premium plastic products to provide practical and reliable solutions for our customers in their daily work.

All of these products have the Bürkle "LaboPlast" quality seal and are manufactured from premium raw materials with many years of production know-how. LaboPlast stands for top-quality products with long service lives that meet the demands of challenging applications like yours.

### Titration burette automatic



Burette with Schellbach stripes type Schilling / Bürkle with original Bürkle dosing armature.

A universal aid in the laboratory, electroplating industry, water treatment plants, for field analyses, etc.

Precise dosing using the press button, exact fine titration with the micro-screw and precise discharge jet. Graduation according to Category B (Tolerances according to DIN ISO 385).

- ▶ Adjusted for Ex
- ▶ Burette made of borosilicate glass 3.3
- ▶ Resistant to chemicals
- ▶ Blue ring graduations (Colodur)
- ▶ Left or right hand operation possible
- ▶ Sturdy stand
- ▶ Precise discharge jet, allowing very fine drops
- ▶ Parts in contact with the medium: PE, PP, natural rubber, borosilicate glass

#### Titration burette automatic

Burette capacity ml	Division ml	Precision ml	Height cm	Capacity l	Item no.
5	0.05	± 0,03	61	0.5	9695-1005 N4
10	0.05	± 0,03	56	0.5	9695-1010 N4
15	0.1	± 0,045	52	0.5	9695-1015 N4
25	0.1	± 0,045	65	1	9695-1025 N4
50	0.1	± 0,075	92	1	9695-1050 N4

### Splinter-proof titration burette



The titration burette with splinter protection is a fast acting burette with Schellbach stripes based on Dr. Schilling's design with automatic zero point extraction and Bürkle dosing armature. The glass burette has a plastic sheathing which increases resistance to breaking and protects against splinters. The possibility of the burette breaking is much lower than with a conventional burette, and if it does break, there will be no dangerous splinters. The Bürkle dosing armature allows for precise dosing and exact fine titration with the press button or micro-screw and precise discharge through the discharge jet.

- ▶ Burette with splinter-proof sheathing
- ▶ Adjusted to Ex
- ▶ Burette made of borosilicate glass 3.3
- ▶ Shatter-proof, resistant to chemicals
- ▶ Sturdy stand
- ▶ Precise discharge jet, allowing very fine drops
- ▶ Parts in contact with medium: PE, PP, natural rubber, borosilicate glass

#### Splinter-proof titration burette

Burette capacity ml	Division ml	Precision ml	Height cm	Capacity l	Item no.
15	0.1	± 0,045	52	0.5	9695-3015 N4
25	0.1	± 0,045	65	1	9695-3025 N4
50	0.1	± 0,075	92	1	9695-3050 N4

## Flow indicators



Flow indicators give precise visual indication of the flow velocity of liquids or gases being transported through hose connections.

- ▶ For hoses with inner diameter of 6 – 11 mm
- ▶ Pressure resistant up to 2 bar
- ▶ Length with grommets 88 mm, height 40 mm, width 15 mm
- ▶ Colour coding – blue, red and black

### Flow indicators LiquiMobil SAN

LiquiMobil flow indicator made of SAN is mainly suitable for cooling systems and helps to reduce water consumption considerably because the cooling water flow can be adjusted better. Not suitable for aggressive substances.

- ▶ Operating temperature LiquiMobil SAN max. +30 °C

### Flow indicators CheMobil PMP

CheMobil made of PMP/TPX can be used for many substances due to its good chemical resistance. Not suitable for strong acids, alkalis and solvents. CheMobil can be steam sterilised.

- ▶ Operating temperature CheMobil PMP max. +60 °C



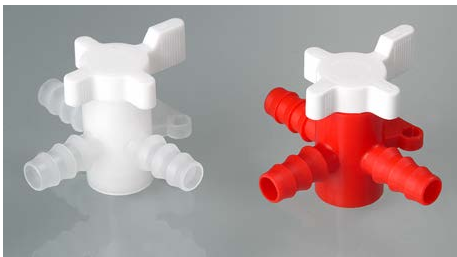
#### Flow indicators LiquiMobil SAN

Colour	Item no.
red	8720-1002 N4
black	8720-1003 N4
blue	8720-1005 N4

#### Flow indicators CheMobil PMP

Colour	Item no.
red	8720-2002 N4
black	8720-2003 N4
blue	8720-2005 N4

## Two-way valves/Three-way valves



Two and three-way valves are used for transfer of liquids or gases in order to release the flow, to block it or to change its direction.

- ▶ PVDF: excellent chemical resistance, transparent, suitable for food
- ▶ PP/PE: for industrial use, red/white
- ▶ Operating temperature: PVDF +0 up to +40 °C, PP/PE +5 up to +40 °C
- ▶ Resistant to compression max. 1 bar
- ▶ With mounting plate for easy installation

### Two-way valves

Material	For dia. mm	Nom. width mm	Item no.
PP/PE	5-7	4	8605-0060 N4
PP/PE	7-9	6	8605-0080 N4
PP/PE	9-11	8	8605-0100 N4
PP/PE	11-13	8	8605-0120 N4
PVDF	5-7	4	8607-0060 N4
PVDF	7-9	6	8607-0080 N4
PVDF	9-11	8	8607-0100 N4
PVDF	11-13	8	8607-0120 N4

### Three-way valves

Material	For dia. mm	Nom. width mm	Item no.
PP/PE	5-7	4	8606-0060 N4
PP/PE	7-9	6	8606-0080 N4
PP/PE	9-11	8	8606-0100 N4
PP/PE	11-13	8	8606-0120 N4
PVDF	5-7	4	8608-0060 N4
PVDF	7-9	6	8608-0080 N4
PVDF	9-11	8	8608-0100 N4
PVDF	11-13	8	8608-0120 N4



## stop-it hose clamps



### stop-it with Easy-Click closure

- ▶ PVDF, aluminium and steel, zinc coated
- ▶ Temperature resistant up to 140 °C
- ▶ For flexible hoses with outer Ø up to 10 mm, 15 mm and 20 mm
- ▶ Available in four fresh colours

### stop-it with Easy-Click closure

For dia. mm	Colour	Item no.
to 10	red	8619-0102 N4
to 10	yellow	8619-0104 N4
to 10	blue	8619-0105 N4
to 10	green	8619-0106 N4
to 15	red	8619-0152 N4
to 15	yellow	8619-0154 N4
to 15	blue	8619-0155 N4
to 15	green	8619-0156 N4
to 20	red	8619-0202 N4
to 20	yellow	8619-0204 N4
to 20	blue	8619-0205 N4
to 20	green	8619-0206 N4

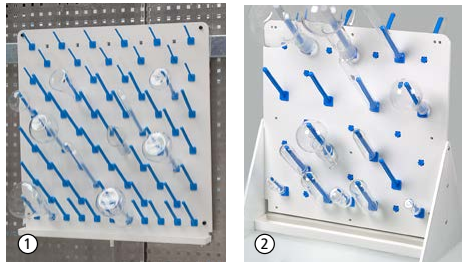
### stop-it metal

- ▶ Galvanised steel and aluminium
- ▶ For flexible hoses with outer Ø up to 10 mm, 15 mm, 20 mm and 30 mm

### stop-it metal

For dia. mm	Item no.
to 10	8619-0510 N4
to 15	8619-0515 N4
to 20	8619-0520 N4
to 30	8619-0530 N4

## Draining rack



Available as:

- ① Draining rack, wallmount, incl. wall mounting set (screws, dowels), optionally available with removable draining channel which has a connection for a draining tube (the drainage water goes into the lab basin)
- ② Draining rack, benchtop, with collecting pan



**Draining rack (wallmount)** made of plastic, shatterproof, proven thousands of times in the lab and adjusted to the requirements there.

The stable rods are individually placed into the holes of the draining rack and are clicked into place. Their positions can be changed at any time. Using a combination of rods of three different lengths (60 mm, 100 mm and extension to 150 mm), the draining rack can be adapted to any apparatus which is to be dried.

**The draining rack (benchtop)** is easy and flexible to set down on a table or working surface. Two large supports with wide bases ensure sufficient stability. Since both sides of the draining board can be used, it provides twice the hanging space. The collecting pan can simply be removed for emptying.

### Draining rack, wallmount

Draining channel	W x H mm	Item no.	
without	400 x 400	9640-1040	N4
without	500 x 500	9640-1050	N4
without	600 x 600	9640-1060	N4
with	400 x 400	9640-2040	N4
with	500 x 500	9640-2050	N4
with	600 x 600	9640-2060	N4

### Draining rack, benchtop

W x H mm	Item no.	
400 x 400	9640-3040	N4
500 x 500	9640-3050	N4
600 x 600	9640-3060	N4

### Accessories

Description	Item no.	
Rods for draining rack length 60 mm, dia. 6 mm	9640-0421	N4
Rods for draining rack length 100 mm, dia. 10 mm	9640-0410	N4
Extension rods for draining rack length 150 mm, dia. 12 mm	9640-0415	N4

## All-purpose trays | Laboratory trays



The laboratory trays are practical all-purpose trays that can be nested when empty, also durable, shatterproof and resist flexing. The trays have a strong, rounded rim.

Suitable as a spill trough for environmentally dangerous, aggressive substances, for experiments, as an etching tray, as an instrument holder, a medicine tray, a photographic development basin, a goods presentation tray and a display tray for foodstuffs.

- ▶ PP, white
- ▶ Manufactured using the injection moulding process, not by deep drawing
- ▶ Trays can be nested
- ▶ Tray not suitable for temperature controlled cupboards or dishwashers
- ▶ Temperature resistant up to +60 °C (briefly up to +80 °C)

### Laboratory trays/spill troughs separate

Capacity l	Inner dimension of base L x W mm	Outer dimension of base L x W mm	Outer dimension of rim L x W x H mm	Item no.
0.5	130 x 180	140 x 190	180 x 230 x 42	4201-1318 N4
1.5	180 x 240	190 x 250	250 x 310 x 65	4201-1824 N4
3.0	240 x 300	250 x 310	310 x 370 x 75	4201-2430 N4
10	300 x 400	310 x 410	420 x 520 x 120	4201-3040 N4
21	400 x 500	430 x 530	534 x 634 x 140	4201-4050 N4
39	500 x 700	520 x 720	648 x 846 x 160	4201-5070 N4

## Funnel stands

Sturdy and stable funnel stand, resistant to chemicals, shatter-proof and with continuously variable height adjustment.

The funnel stand is suitable for all funnels from 40 to 180 mm in diameter. The funnel holders can be used with reducing inserts for small funnels.

The funnel stand also makes an excellent filtering stand.

Thanks to an innovative magnet concept no clamping screws are necessary. The height of the funnel holder can be adjusted easily and flexibly with one hand.

The laboratory stand can be flexibly adapted with corresponding accessories, for example with adjustment funnel holders or a holder for Imhoff funnels. The funnel stand can also be converted into a pipette stand.

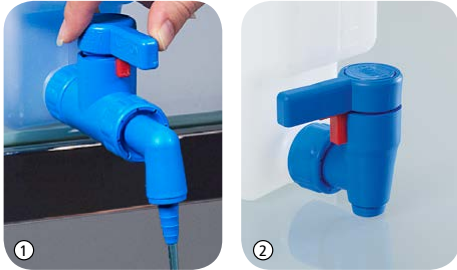
- ▶ PP, chrome-plated steel
- ▶ Continuously variable height adjustment with innovative magnet concept
- ▶ Adjustable height up to 450 mm
- ▶ For funnels Ø 40 - 180 mm
- ▶ Additional funnel holders are available as accessories



### Funnel stands

Model	Item no.	
for two funnels	9622-0200	N4
for four funnels	9622-0400	N4

## StopCock | Compact spigot | Compact jerrycan



### ① StopCocks

- ▶ Tight-closing for complete seal
- ▶ Especially effortless
- ▶ With connecting cap nut, guaranteed vertical position of the cock
- ▶ Pressure-resistant up to 2 bar at 20 °C (without discharge bracket and grommet)
- ▶ With discharge angle and rotatable spout preventing drips
- ▶ With tapered spout for bottles with narrow openings with a diameter from 6 to 8 mm
- ▶ Media-contacting parts PP, PE and PTFE



### ② Compact spigot

- ▶ Space-saving design
- ▶ Optimised discharge for even flow
- ▶ With connecting union nut for vertical position of the stop cock
- ▶ Tight-closing for complete seal



### Compact jerrycan

- ▶ With or without threaded connector 3/4"
- ▶ PP, transparent
- ▶ With tamper-proof closure
- ▶ Canister without valve autoclavable
- ▶ With moulded, indestructible litre graduation

### Compact jerrycan

Model	Capacity l	Width mm	Depth mm	Height mm	Opening dia. mm	Item no.
without threaded connector	5	65	335	335	41	0435-1050 N4
with threaded connector 3/4"	5	65	335	335	41	0435-2050 N4
without threaded connector	10	125	335	335	41	0435-1100 N4
with threaded connector 3/4"	10	125	335	335	41	0435-2100 N4

### StopCocks

Thread, inflowing side	Thread, outflowing side	Item no.
3/4" inner thread cap nut	spout/nozzle	0525-1000 N4

### Compact spigot

Thread, inflowing side	Item no.
3/4" inner thread cap nut	0530-1000 N4

## Spray bottle Turn'n'Spray with overhead valve



Spraying over your head is not possible with standard spray bottles. As soon as the suction tube is no longer immersed in liquid, you can't spray any more. No so with our overhead spray bottle Turn'n'Spray. It features a special technology that allows you to spray from any position. That means you can spray practically and conveniently from any direction and reach hard-to-access places easily and without straining. The high-quality, refillable quality spray bottle can be used again and again.

- ▶ Uninterrupted spraying, even over your head
- ▶ Parts in contact with media made of PP, PE, silicon and stainless steel
- ▶ Nozzle diameter 0.6 mm, nozzle is continuously adjustable
- ▶ Amount sprayed per stroke: 1.2 ml ± 0.1

### Spray bottle Turn'n'Spray

Capacity ml	Height with cap mm	Neck dia. inside mm	Item no.
250	220	18	0309-0002 N4
500	240	18	0309-0005 N4
1000	295	17.5	0309-0010 N4

## Spray bottle



Pressureless spray bottle made of LDPE with long-life hand pump. The functioning of each individual sprayer is tested during manufacture.

Areas of application: Industry, laboratories, production, leisure, household. Suitable for agricultural pesticides and detergents.

- ▶ Media-contacting parts PP, PE and stainless steel
- ▶ Nozzle 0.6 mm diameter, nozzle steplessly adjustable
- ▶ Spray volume per stroke: 1.2 ml ± 0.1

### Spray bottle

Capacity ml	Height with cap mm	Neck dia. inside mm	Item no.
250	220	18	0309-1025 N4
500	240	18	0309-1050 N4
1000	295	17.5	0309-1100 N4