



**KIMTECH™**

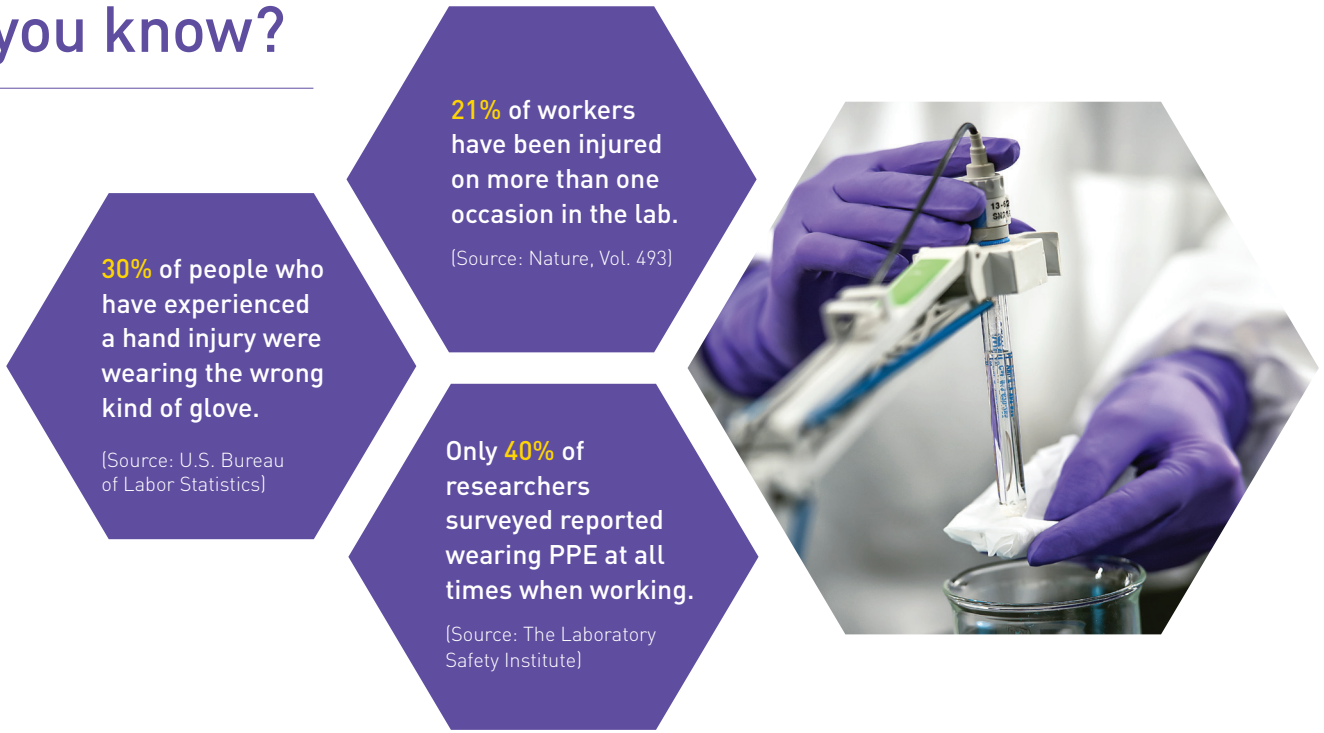
## Solutions for the Research segment

Gloves and apparels engineered for  
**Protection, Compliance and Comfort**

 **Kimberly-Clark**

PROFESSIONAL

# Did you know?



## Product guideline for your application

Application		Molecular Biology   Biochemistry   Chemistry   Analytical Chemistry   Virology   Genomics   Proteomics   Forensic Science   Non-Sterile Pharmaceutical Production						
	Main Technique	Primary Risk	Secondary Risk					
HIGHER RISK APPLICATIONS	Electrophoresis	Chemicals	Contamination					
	Polymerase chain reaction	Contamination	Biohazard					
	DNA extraction	Chemicals	Contamination					
	Chemical Synthesis & Derivatization	Chemicals	Contamination					
	Pathology	Biohazard	Contamination					
	Toxicology	Chemicals	Biohazard					
LOWER RISK APPLICATIONS	Cell Culture	Contamination	Sensitive Instruments					
	Microscopy	Contamination	Sensitive Instruments					
	Spectroscopy	Contamination	Sensitive Instruments					
	Chromatography	Chemicals	Contamination					



Kimtech™ Purple Nitrile™ Xtra™ Gloves



Kimtech™ A7 P+ Laboratory Coat



Kimtech™ Opal™ Gloves



Kimtech™ Sterling™ Gloves







Kimtech™ A7 Laboratory Coat



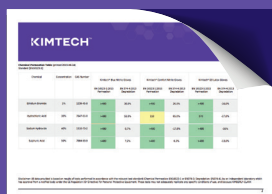
# Kimtech™ Laboratory Gloves

## – Chemical Risk selection guide

Product Code	Description	Sizing	Chemical Protection EN ISO 374-1+A1	Biohazard Protection EN ISO 374-5	AQL	Glove Length	Chemical
 97610-97614	Purple Nitrile™ Xtra™ Gloves	XS - XL	Type B (JKT)	Virus	0.65	30cm	<b>CHEMICAL PROTECTION LEVEL</b> Moderate chemical splash <b>HIGHEST</b> Chemotherapy & High Risk Applications <b>LOWEST</b> Low risk - Light splash
 90625 -90629	Purple Nitrile™ Gloves	XS - XL	Type B (JKT)	Virus	0.65	24-25cm	
 62880 - 62884	Opal™ Nitrile Gloves	XS - XL	Type B (KPT)	Virus	1.5	24cm	
 99210 -99214	Sterling™ Nitrile Gloves	XS - XL	Type C	Virus	0.65	24-25cm	

## Chemical Permeation Data

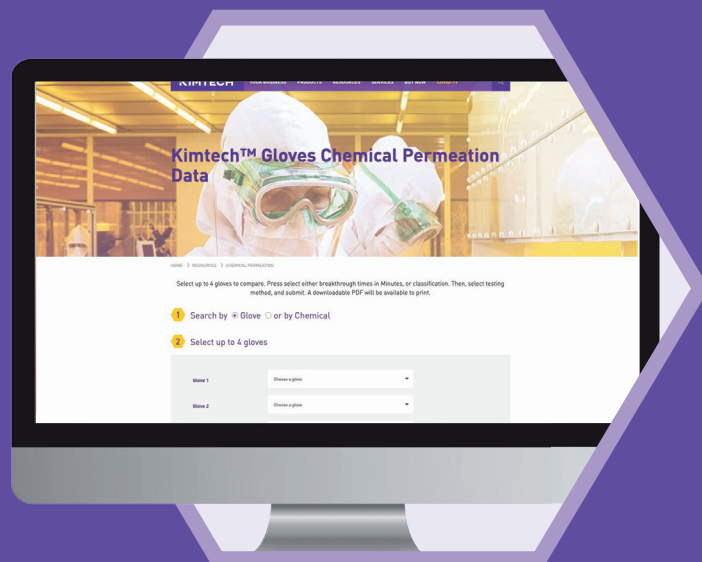
- Visit [www.kimtech.eu](http://www.kimtech.eu), from the top menu select Resources and then Chemical Permeation.
- Select up to 4 gloves to compare or select a specific chemical.
- Select either breakthrough times in minutes, or classification.



- Submit and download your PDF.

### ➤ On our website you can also find these additional resources:

- Detailed product descriptions, including Technical Data Sheets, Declaration of Conformity and Food Contact Declaration of Compliance
- Certificates and information on PPE legislation
- Literature



# Protect your Science and the Scientists

Enhance your lab environment by using Kimtech™ Products, designed for precision tasks and exacting performance.

## IF IN USE

## UPGRADE TO THIS



### Bulky gloves or double-donning

- Routine lab procedures such as pipetting, working with microscopes, operating microtomes, and using cell counters can put researchers at risk for repetitive motion injuries
- Wearing bulky gloves or multiple pairs at one time can reduce dexterity and increase the time it takes to complete a task



### Kimtech™ Nitrile gloves

- Offering high dexterity and comfort for a variety of applications
- Designed to protect Scientists from Chemical Splash and Micro-Organism Hazards
- Non detectable level of chemical accelerators to mitigate risk of skin irritations



### Exposed forearms

- Chemical splashes can lead to skin irritations or burns



### Kimtech™ A7 P+ Lab Coats

- Comfortable to wear, breathable, silicone and latex free
- High mandarin collar for your neck and extra long arms with thumb loops and elasticated cuffs cover the gap between glove and sleeve



### Slip and fall risks

- Falls are a leading cause of workplace injury, with slip-and-fall events being the most common
- No environment is immune to these incidents, not even the most rigorously controlled settings



### Kimtech™ A8 Shoe Covers with Unitrax

- 4X more grip than leading alternatives
- Seamless bottom for better comfort
- 3 sizes for a custom fit



### Basic wipers

- Unprotected wipers are likely to be contaminated
- Less effective in absorbency, cleaning surfaces and reducing waste



### WypAll® Wipers

- Our range of WypAll® wipers are strong and absorbent, single use wipers, perfect for routine cleaning
- Hygienically packed they can be dispensed with ease



### Equipment and Glassware cleaning

- Microscopes, testing equipment and glassware need to be clean to conduct experiments
- Dirty equipment can impact productivity and scientific results



### Kimtech™ Science™ Delicate Task Wipers

- For delicate equipment, surfaces, optics and materials, our low-lint and high absorbency white wipers have you covered
- Light duty, white-coloured wipers made from 100% pure fibre
- Chemically inert and anti-static



### Used PPE in the waste bin

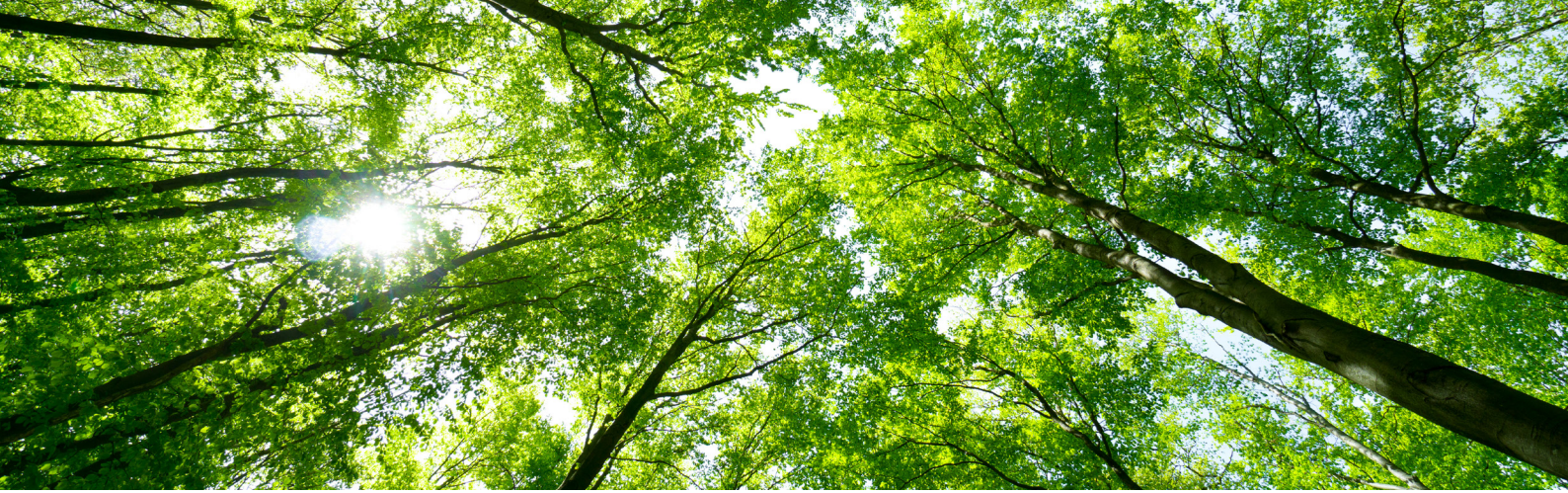
- In many labs, used PPE is discarded with the normal waste
- High usage of products can lead to high waste disposal fees and impact compliance with sustainability goals



### RightCycle by Kimberly-Clark Professional®

- Can divert used PPE waste from landfill and convert it into new consumer goods
- Helps the lab meet its sustainability metrics





# Imagine a different future for your waste stream – The RightCycle™ Programme



By Kimberly-Clark Professional®

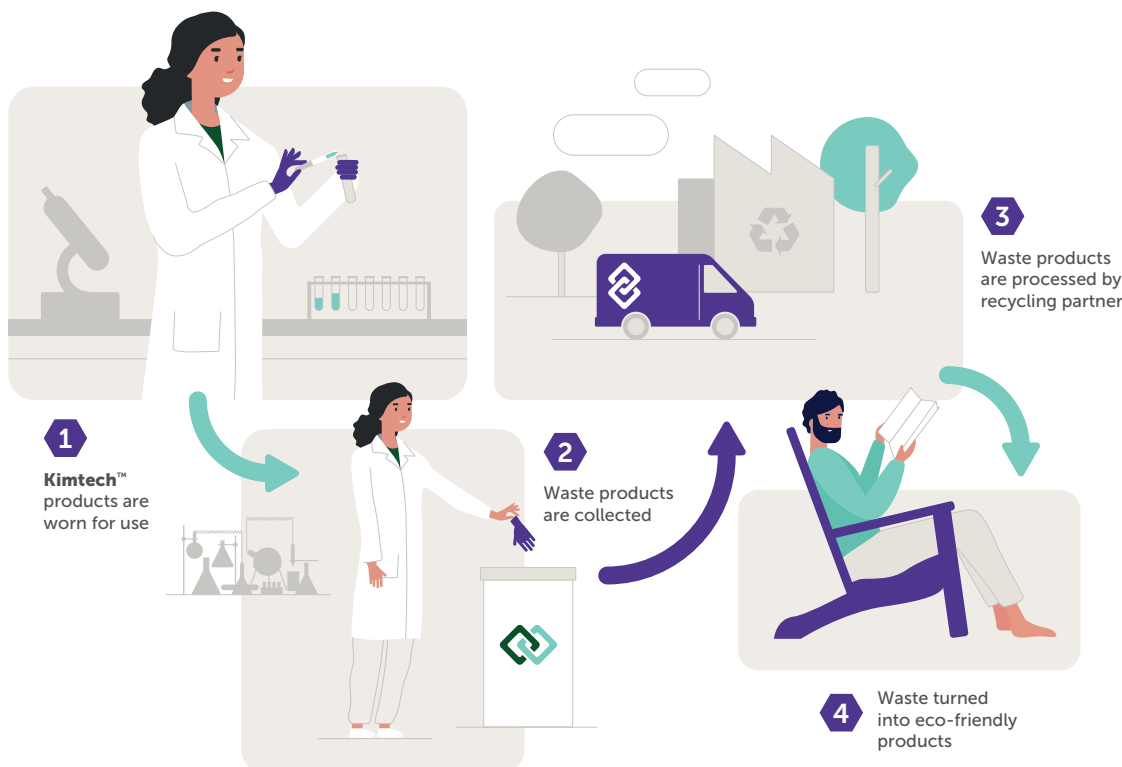
The RightCycle™ Programme is a groundbreaking service that enables you to collect previously hard-to-recycle items, such as Kimtech™ nitrile gloves and single-use apparel items, and have them turned into new consumer goods. Through this programme, you can:

- Reach your organisation's sustainability goals
- Divert waste from the landfill in support of zero waste to landfill initiatives
- Give your used nitrile gloves and single-use apparel items a new life by aiding in the creation of new consumer goods like flower pots, patio furniture, and plastic shelving
- Reduce your waste disposal costs
- Protect the planet for future generations

The RightCycle™ Programme is open to all companies who operate in the UK, Ireland, Germany, Austria, France, Belgium and Spain and currently use or want to switch to Kimtech™ nitrile gloves and / or apparel items. These safety products must not be exposed to hazardous contaminants or require special handling or disposal. Autoclaved waste is accepted.

## Ready to join?

1. Contact your local Kimberly-Clark Professional™ representative or e-mail [kimtech.support@kcc.com](mailto:kimtech.support@kcc.com) to learn about how this programme can benefit your business.
2. Our Kimberly-Clark Professional™ contact person will explain the programme details, provide you with marketing tools and a bulk bag to start the collection.



# Kimtech™ Laboratory Products Selection Guide

Product Code	Size / Format	Total Case content	Material	Characteristics	ISO or Class	Regulatory	Chemical Splash Protection	Micro-organisms Protection	Food Contact
--------------	---------------	--------------------	----------	-----------------	--------------	------------	----------------------------	----------------------------	--------------

## Laboratory Range

### Kimtech™ Laboratory Gloves

Purple™ Xtra™ Nitrile Gloves	97610 to 97614	XS to XL	10 x 50 gloves	Nitrile	textured fingertips	ISO 6 or higher Class C/D	PPE Cat III	EN ISO 374-1 Type B (JKT)	EN ISO 374-5 Virus	Approved
Purple™ Nitrile Gloves	90625 to 90629	XS to XL	10 x 100 <sup>(1)</sup> gloves	Nitrile	textured fingertips	ISO 6 or higher Class C/D	PPE Cat III	EN ISO 374-1 Type B (JKT)	EN ISO 374-5 Virus	Approved
Opal™ Nitrile Gloves	62880 to 62884	XS to XL	10 x 200 <sup>(3)</sup> gloves	Nitrile	textured fingertips	ISO 8 or higher	PPE Cat III	EN ISO 374-1 Type B (KPT)	EN ISO 374-5 Virus	Approved
Sterling™ Nitrile Gloves	99210 to 99214	XS to XL	10 x 150 <sup>(2)</sup> gloves	Nitrile	textured fingertips	ISO 6 or higher Class C/D	PPE Cat III	EN ISO 374-1 Type C	EN ISO 374-5 Virus	Approved

### Kimtech™ Lab Coats

A7 Lab Coat	96700 to 96740	S to 2XL	15 lab coat	SMS <sup>(4)</sup>	individually packed	ISO 8 or higher	PPE Cat III	Type 6 (PB)		
A7P+ Lab Coat	97700 to 97740	S to 2XL	15 lab coat	Laminated SMS <sup>(4)</sup>	individually packed	ISO 8 or higher	PPE Cat III	Type 6 (PB)	EN 14126:2003	

### Kimtech™ Science Wipes

Precision Wipes (White)	7551	30 x 30 cm	15 boxes x 196 sheets	Paper	1 ply	ISO 8 or higher				
Precision Wipes (White)	7552	11,5 x 21 cm	30 boxes x 280 sheets	Paper	1 ply	ISO 8 or higher				
Delicate Task Wipes (White)	7557	20 x 21 cm	24 boxes x 100 sheets	Paper	2 ply	ISO 8 or higher				
Delicate Task Wipes (White)	7558	20 x 21 cm	15 boxes x 200 sheets	Paper	2 ply	ISO 8 or higher				

\* For more details on the products please refer to the corresponding technical data sheet

(1) 10 x 90 for size XL

(2) 10 x 140 for size XL

(3) 10 x 170 for size XL

(4) SMS : spunbond - meltblown- spunbond

For more information visit [www.kimtech.eu](http://www.kimtech.eu)

For technical assistance contact us at [kimtech.support@kcc.com](mailto:kimtech.support@kcc.com)

It is the employer's responsibility to assess the risk of the task to be undertaken and determine the correct choice of personal protective equipment for the task. The manufacturer, Kimberly-Clark, does not accept any responsibility for the incorrect choice or misuse of the personal protective equipment shown in this brochure. All care has been taken to ensure that the information contained herein is as accurate as possible at the time of publication, however errors may occur and legislation concerning personal protective equipment is under constant review and may change in the lifetime of this brochure. Accordingly, the specification for the products may be subject to change. We would advise you to contact your local sales representative if you have any queries concerning the products shown or the suitability of such products for a particular task. Always dispose of used protective equipment in a safe and appropriate manner in accordance with European, National and Local environmental regulations.

©/™ Trademarks of Kimberly-Clark Worldwide, Inc. or its affiliates. © KCWW. The colour Purple and Purple Nitrile™, the colour Grey and Sterling™ are trademarks of Owens & Minor, Inc. or its affiliates and used under license.

Publication code: 5529 EN 09.22